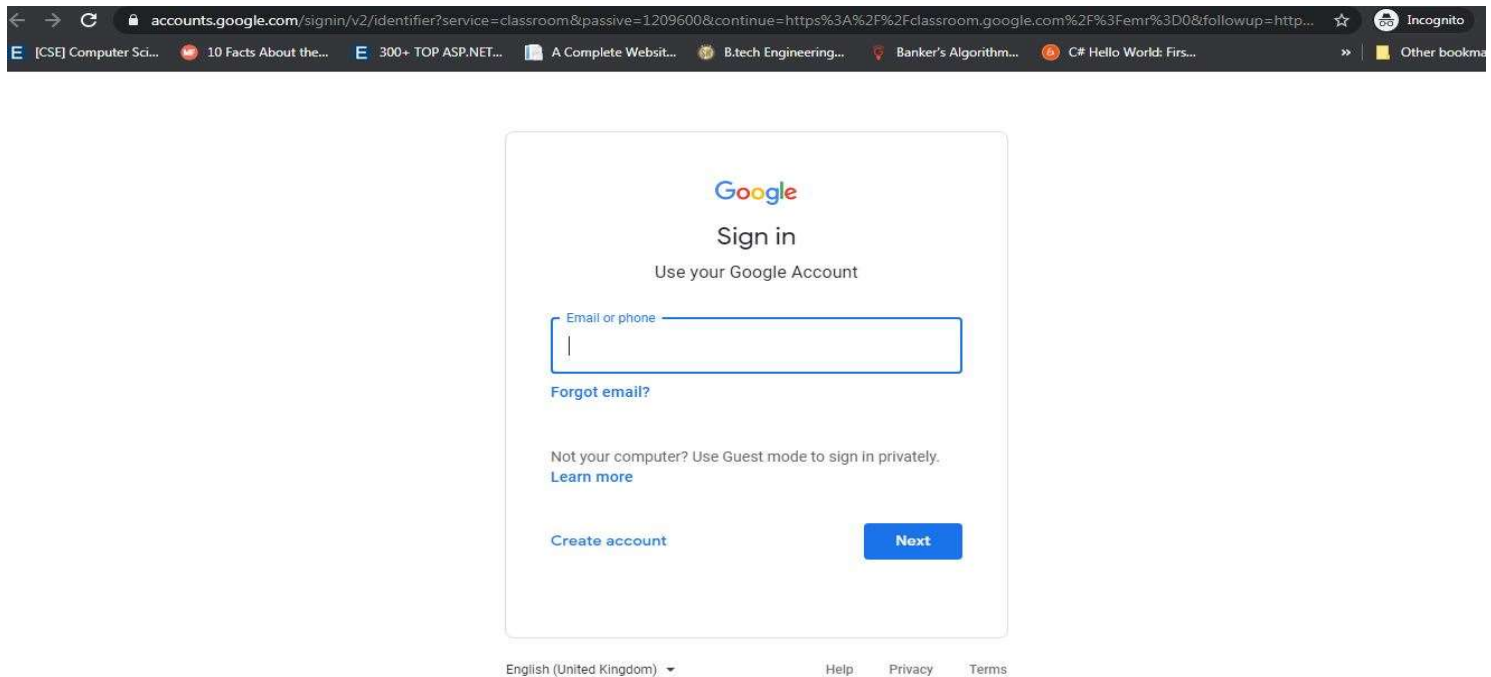
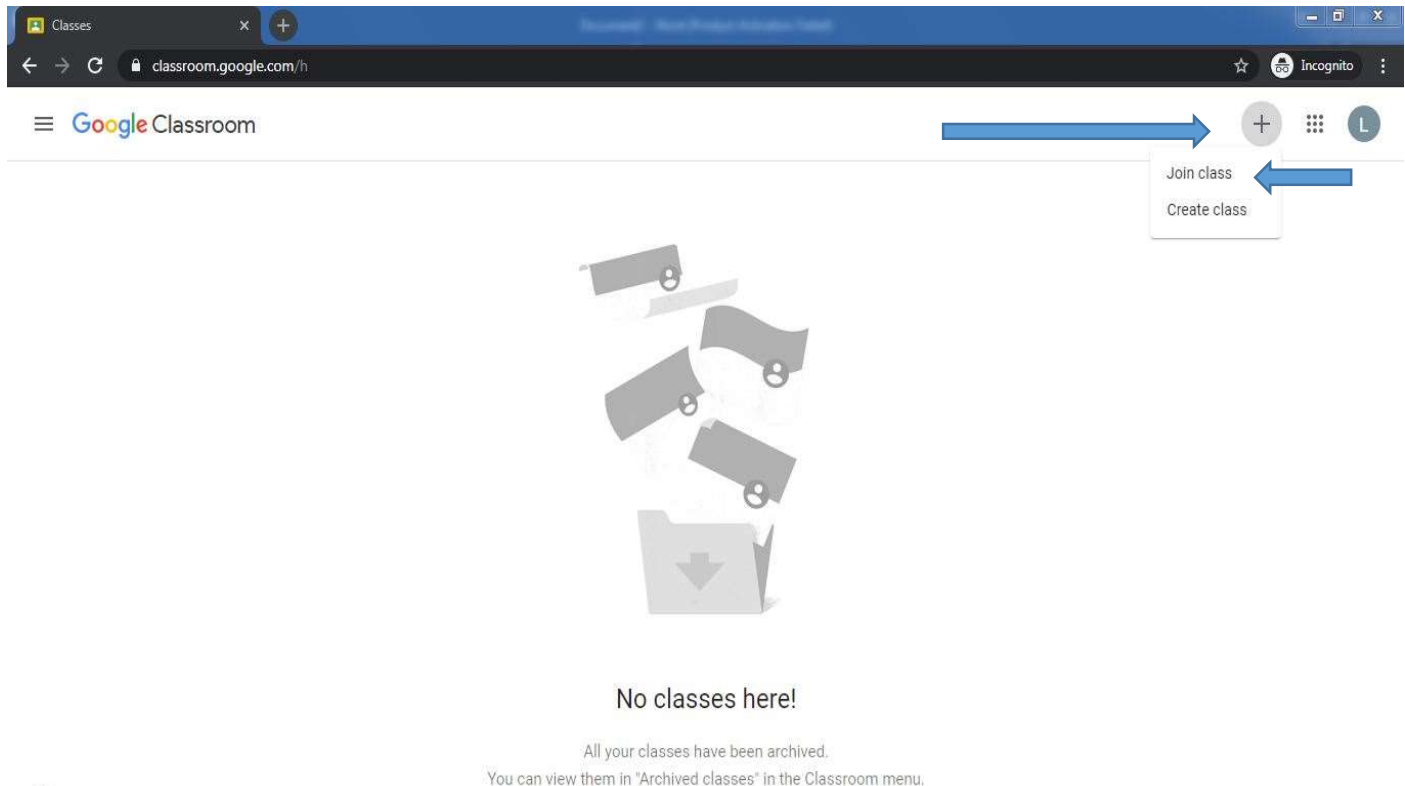


# Steps to take Quiz for Students

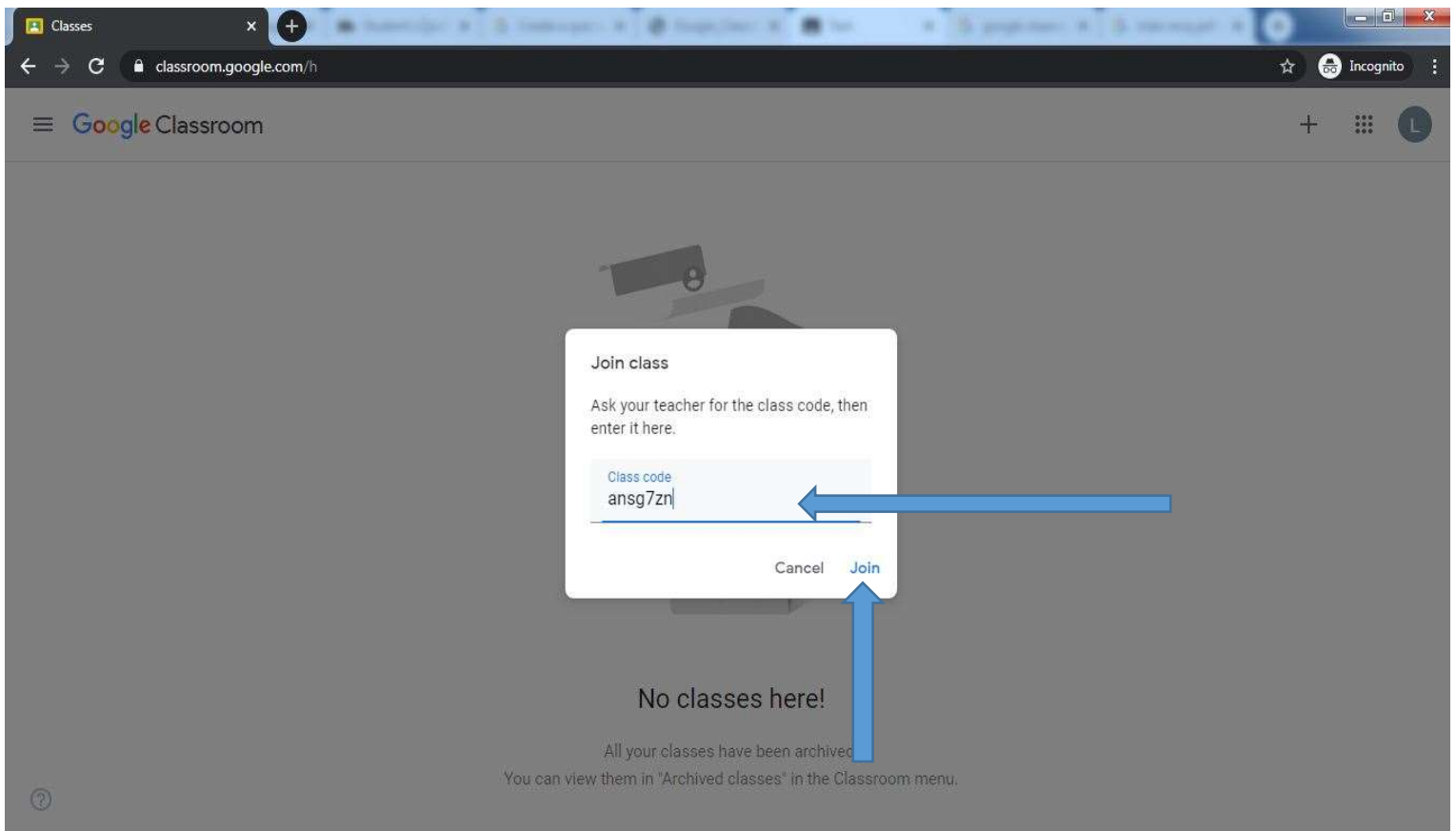
1. Open a Web browser and go to [classroom.google.com](https://classroom.google.com). You have to sign in with GMAIL e-mail account and password.



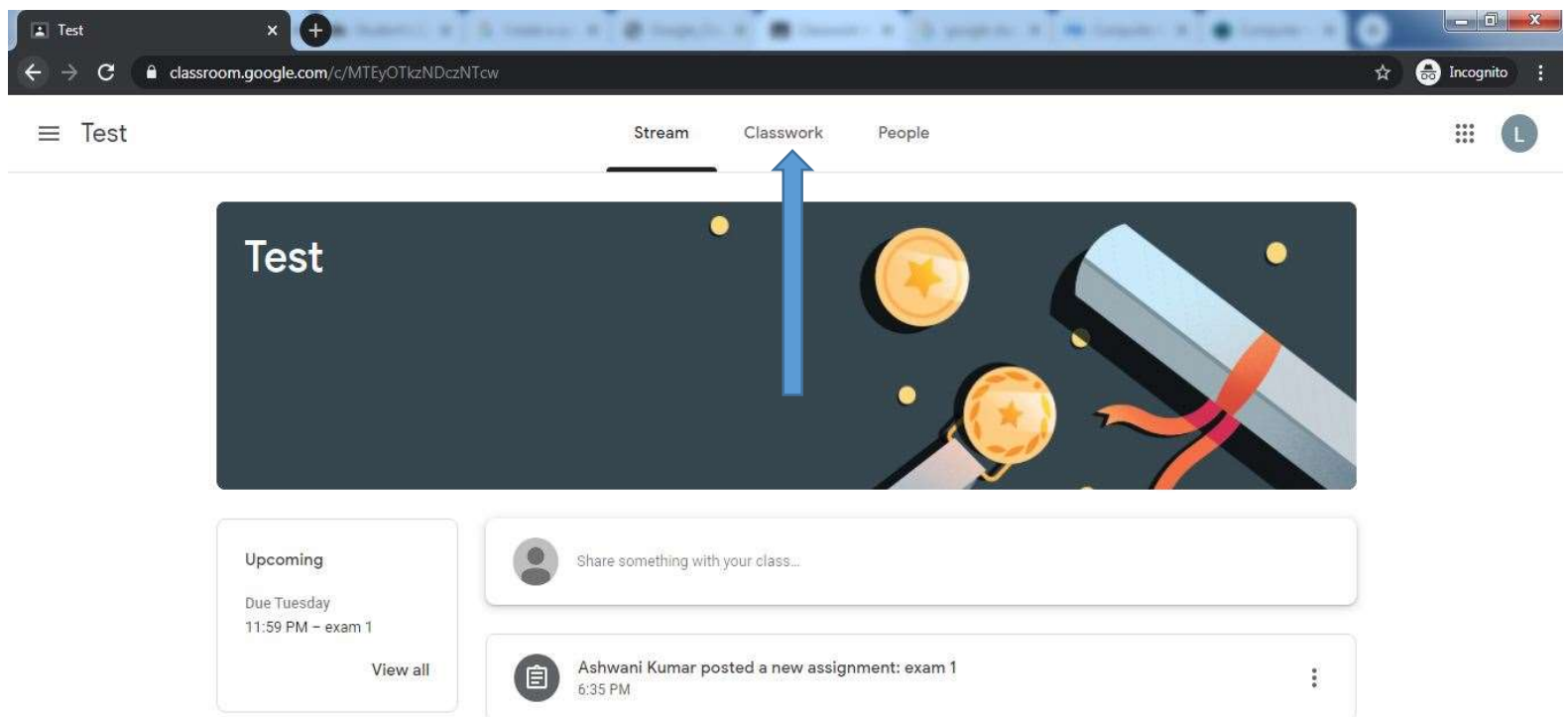
2. This blank page will open click on + and then click on join class.



**3. Enter the Class Code given to you by your teacher, and click Join.**



**4. After joining the class. you will see the exam on stream or click on classwork.**



5. Click on your exam

Classwork for Test

classroom.google.com/w/MTEyOTkzNDczNTcw/t/all

Incognito

Test

Stream

Classwork

People

View your work

Google Calendar

Class Drive folder

exam 1

Due Jun 16, 11:59 PM

Posted 6:35 PM

Attempt all the questions

Assigned

Google Forms

View assignment

Due date or time

Click on this exam

View other details of exam like marks

6. Like this

exam 1

classroom.google.com/c/MTEyOTkzNDczNTcw/a/MTEyOTkzNDczMDY2/details

Incognito

Test

Stream

Classwork

People

Due Jun 16, 11:59 PM

exam 1

2 points

Ashwani Kumar 6:35 PM

Attempt all the questions

Google Forms

Class comments

Add class comment...

Your work

Assigned

+ Add or create

Mark as done

Private comments

Add private comment...

?

**7. After step 5 this page will open contains exam paper. First fill your personnel details.**

The screenshot shows a Google Forms interface in a web browser. The form is titled "Exam 1" and includes the instruction "Each question having 1 mark." and a red asterisk indicating required fields. The form contains three text input fields: "Email address \*", "Student name \*", and "Exam roll no. \*". Each field has a placeholder text "Your email", "Your answer", and "Your answer" respectively. The browser's address bar shows the URL: docs.google.com/forms/d/e/1FAIpQLScuhaqEqcmbnAOTz40rF\_mpNre7oW6vh33DHmdhmp3CeKN5Q/viewform?hr\_submission=ChkI3ouDtv4BEhAI-rO-96QDEgcloqi-...

**8. View of question paper. Click on the right answers and after completing all the questions then click on submit.**

The screenshot shows a Google Forms interface with two multiple-choice questions. The first question is "Which one of these stores more data than a DVD ? \*" with four radio button options: "CD Rom", "Blue Ray Disk", "Red Ray Disk", and "Floppy". The second question is "Full form of URL is ? \*" with four radio button options: "Uniform Resource Locator", "Uniform Resource Link", "Uniform Registered Link", and "Unified Resource Link". Both questions are worth 1 point. A blue arrow points from a text box labeled "Marks for each question" to the "1 point" value of the first question. At the bottom, there is a "Submit" button and a toggle switch for "Send me a copy of my responses." The browser's address bar shows the same URL as the previous screenshot.

9. After submitting the exam scores will be viewed by click on view score (if allowed to view by exam teacher)

